

ARMADURA INDUSTRIAL 100W IP65

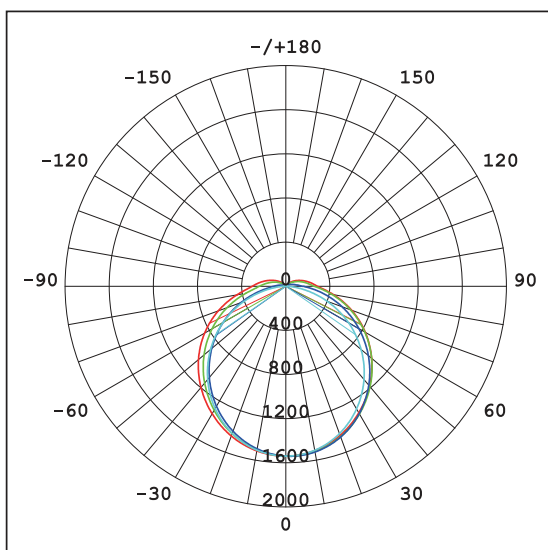
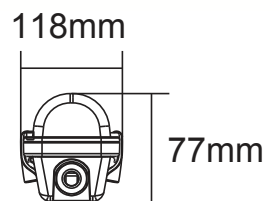
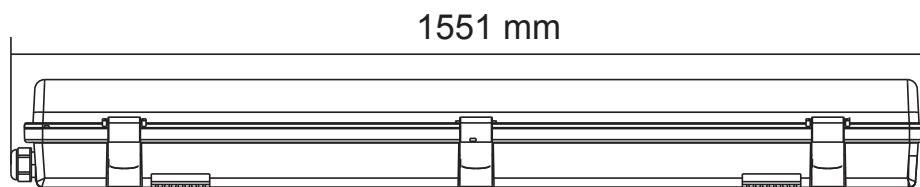
DIFUSOR OPALINO EM PC
MÓDULOS NXT HIGH FLUX



9200 Lm

FLUXO TOTAL 14862 Lm

100W



PC MATERIAL	≥ 80 CRI	≤ 3 SDCM	120° ANGLE	50000h LIFE TIME	IP65 IP RATING
----------------	-------------	-------------	---------------	---------------------	-------------------

Voltage / frequency	220-240V 50/60HZ
Power	100W
LED	MÓDULOS NXT
DRIVER	Driver LCI 105W 250-1050mA 300V flexC NF Ip EXC3 (INDUSTRY)
CCT	3000-4000K
Luminous flux	9000 Lm
Dimensions size (mm)	1551x118x77

*POWER BY
OSRAM
Opto Semiconductors



LED Driver from Tridonic for industrial applications have been designed to reduce stress on the components and lead to long life (thermal load/peak voltage). Designed for extremely harsh environments

Qualities	Standard performance	Tridonic Industry
Temperature range	-25°C...+50°C	-40°C...+70°C
Dielectric strength (surge/burst)	2 kV	4 kV
Guarantee	5 Years	8 Years
Lifetime ta=50°C	70,000 h	200,000 h
Lifetime ta=60°C	30,000 h	100,000 h
Lifetime ta=70°C	0 h	50,000 h
Max. Failure rate (50,000h, ta=50°C)	10%	2.5%

Designed for extremely harsh environments

- Ambient temperatures of - 40 to +70° C
- Protection against transients up to 4 kV
- 4 times longer life and 4 times lower error rate than standard devices

Driver for industrial applications

O LED Driver da Tridonic para aplicações industriais foi projetado para reduzir o stress nos componentes e levar a uma longa vida útil (carga térmica / pico de tensão).

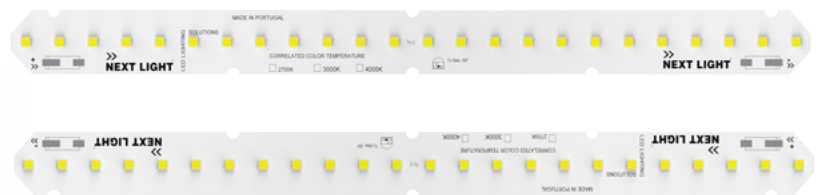
Projetado para ambientes extremamente agressivos

Temperatura ambiente de - 40 a + 70° C

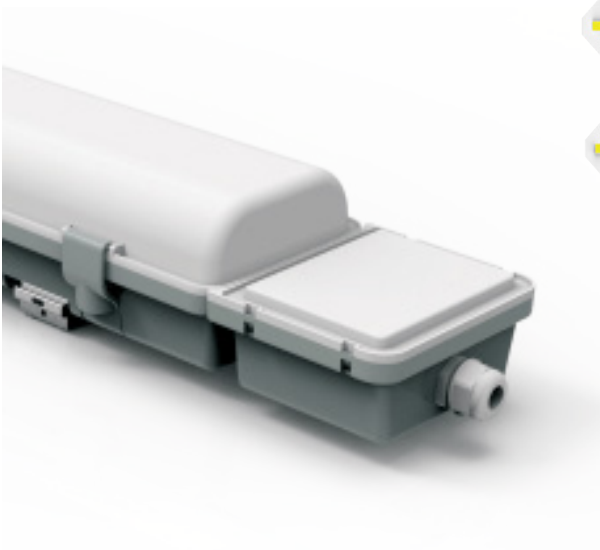
Proteção contra transientes (surto de tensão elétrica) até 4 KV

4 vezes mais tempo de vida e taxa de erro

4 vezes inferior



MÓDULOS EM DUPLA LINHA, TOTALIZANDO 310 CM



0901001D.150.U

ARMADURA IP65 150CM 100W 3000K OPAL DALI

0901002D.150.U

ARMADURA IP65 150CM 100W 4000K OPAL DALI

0901003.150.U

ARMADURA IP65 150CM 100W 3000K OPAL ON/OFF

0901004.150.U

ARMADURA IP65 150CM 100W 4000K OPAL ON/OFF

CAIXA PARA CONEÇÃO EXTERNA

Inc. nas peças independentes, não sendo necessária a abertura da armadura na instalação.